



Technical Assistance to Connectivity in the Western Balkans EuropeAid/13785/IH/SER/MULTI

Preparation of project documentation for the access road between the new railway border station at Tabanovce (North Macedonia) and the adjacent road terminal

NORTH MACEDONIA

Partners:

- Ministry of Finance
- Ministry of Transport and Communications
- Public Enterprise for State Roads
- Macedonian railways
- EBRD

Budget of Technical Assistance:

- Euro 274,000

EU contribution¹:

- As above (100%)

Technical Assistance provided by:

- CONNECTA (Technical Assistance to Connectivity in the Western Balkans)

The Western Balkans summit in July 2016 in Paris adopted a regional Connectivity Reform Measures Management Plan. Among these connectivity transport reform measures are measures related to border crossing procedures.

This assignment of CONNECTA is contributing to the European Union's "Connectivity Agenda" in the Western Balkans. The assignment aims to support the Macedonian beneficiaries in implementing part of the agreed measures related to Integrated Border Management, more precisely on border crossings, transport and trade facilitation.

The purpose of the assignment was to study and design an access road between the existing road terminal near Tabanovce and the expanded railway border station. The access road will be used by the general public and the staff of the railway border station. It will provide safer and faster movement for the staff and passengers who would otherwise have to cross the narrow streets of the adjacent village of Tabanovce. The road will therefore contribute to the effective operation of the improved railway border station at Tabanovce.

The assignment components included:

- 1) Preparation of Feasibility Study and Preliminary Design;
- 2) Supporting beneficiaries in preparation of Western Balkans Investment Framework (WBIF) investment grant application;
- 3) Preparation of Infrastructure Project and Detailed Design as per Macedonian requirements.
- 4) Preparation of tender documentation for construction and Terms of Reference for supervision of works.



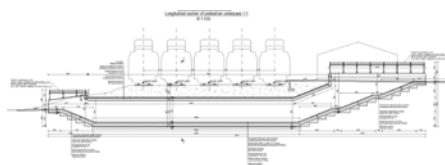
Example of a joint border crossing point.

Results achieved by the TA:

- Tender documentation for access road including a bridge, a pedestrian underpass and a parking lot.



Site plan of the Tabanovce railway border compound



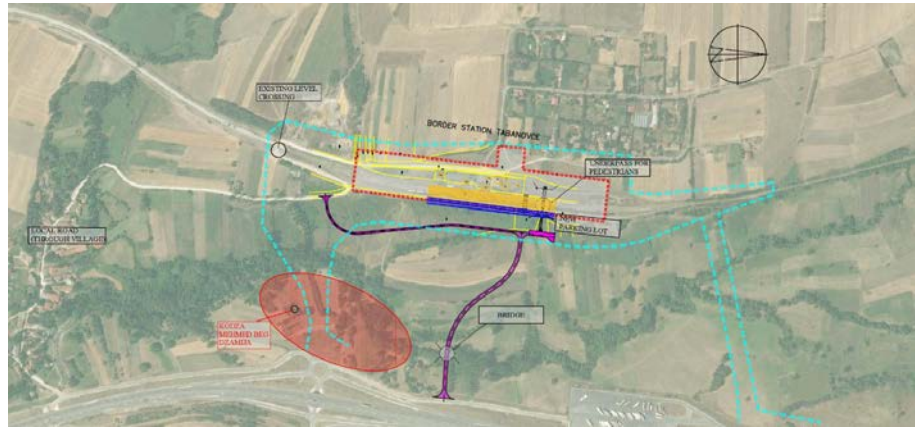
Longitudinal section of pedestrian underpass of the Tabanovce JRBS

Transport

¹ EU contribution concerns only Technical Assistance services for project development

Key recommendations - further actions:

- Next stage should be construction. No recommendations for this stage.



Tabanovce railway border station with access road - overview map

Key Conclusions:

The improved Tabanovce railway border station is planned as a multidirectional joint rail crossing point for international cargo and rail passenger traffic. It will reduce delays at the border and shorten the border-crossing procedure by enabling border crossing in one place only as one stop.

A fast and safer connection between the road and railway border crossings is highly recommended and the CONNECTA Technical Assistance prepared the documentation that will allow the construction of this road and its structures. The road will bypass the village of Tabanovce and allow heavy vehicles to have access to the expanded railway border station.

Benefits expected due to Technical Assistance:

- Completion of study, design and tender documentation for the access road between the road and railway border crossings at Tabanovce. This will allow the construction of the road and its structures.

Anticipated impacts:

- Faster and safer journeys ensured for travellers between the railway border station and the road terminal; and
- Increased safety of residents and an improved environment due to less traffic in the village of Tabanovce.